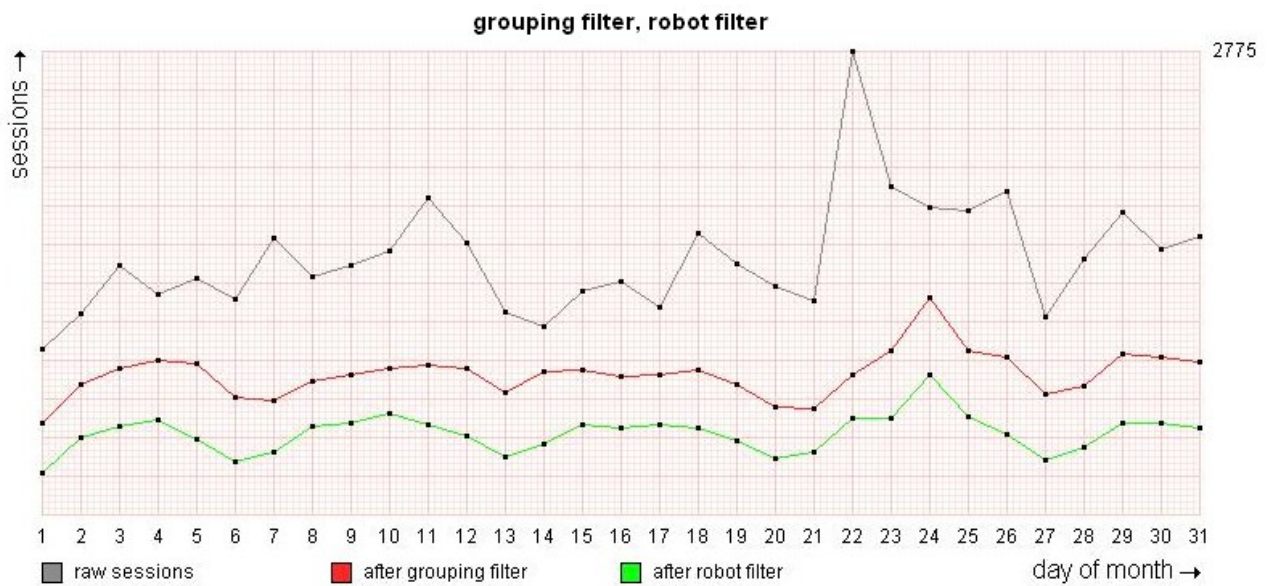


## Filter statistics

Shows the filter statistics in a given time frame. Enables to compare raw sessions with filtered sessions (grouping and robot filters).



### Grouping filter, robot filter graph

Shows the raw sessions against the grouped and robot sessions.

Gray	Raw session.
Red	Robot sessions.
Green	Real visitors.

### Statistics table

Gives a table with the top, min and average raw session, sessions after grouping filter and sessions after the robot filter.

### Robot filter graph

Shows the after grouping filtered sessions against the after robot filtered sessions.

Red	After grouping filter.
Green	After robot filter.
Blue	Authenticated sessions.

**Statistics table**

Gives a table with the top, min and average grouped sessions, after robot filtered sessions and authenticated sessions.

**Filtered sessions, robot sessions graph**

Shows the grouped sessions against the robot sessions and filtered (visitor) sessions.

Gray	Grouped session.
Green	Filtered sessions (visitors).
Red	Robot sessions.

**Statistics table**

Gives a table with the top, min and average grouped sessions, robot sessions and visitor sessions.